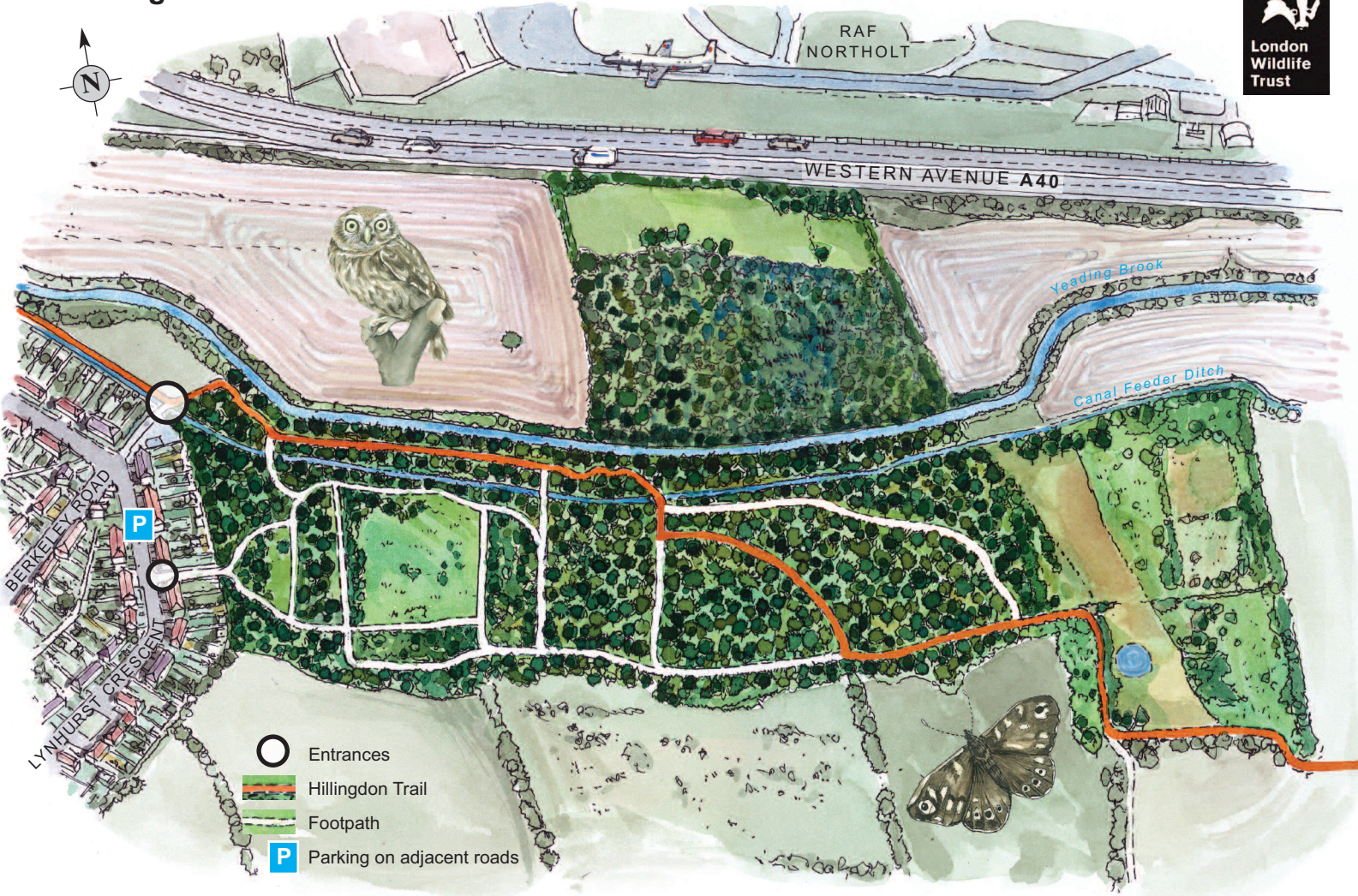
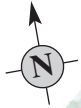


Gutteridge Wood and Meadows




RAF NORTHOLT

WESTERN AVENUE A40


Yeadon Brook

Canal Feeder Ditch

○ Entrances

 Hillingdon Trail

 Footpath

 Parking on adjacent roads

BERKELEY ROAD
LYNHURST CRESCENT

Gutteridge Wood and Meadows

One of the most important sites for wildlife in the Yeading Valley.

Ancient woodland is adjacent to meadows, thickets, river and a pond. Part of the Wood, called Cut Throat Wood, appears on old maps. A long line of fine oaks stretches down to the hedgerow to the south marking the field boundaries between the woods. Mainly oak, with some ash, silver birch, the hazel understory has been coppiced in the past, and this has recently been reinstated to let more light reach the ground and encourage ground level vegetation.

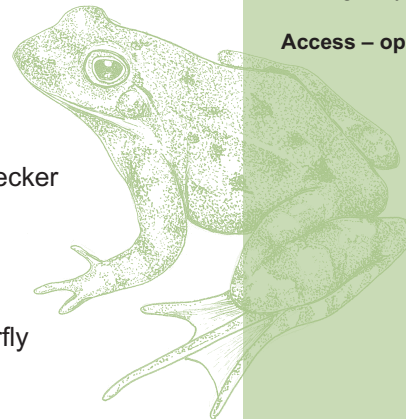
Along the northern edge of the Meadow there are many wildflowers, particularly in the strip between the path and the ditch, a disused canal feeder. The meadows are of great interest, the variation in dampness and the lack of modern farming methods have ensured that a wide variety of grasses and

flowers have survived with a spectacular array of butterflies and other insects.

The woodland, scrub and meadow is home to a wide range of birdlife throughout the year. The pond is home to many invertebrates and amphibians including common frog and newt. Some of the surrounding fields are actively farmed and are not part of the reserve, but with their fine hedgerows and trees they contribute to the special and attractive character of the area.

What to look for at Gutteridge Wood and Meadows:

- English oak
- Hazel
- Bluebell
- Grey squirrel
- Kestrel
- Great spotted woodpecker
- Kingfisher
- Little owl
- Common frog
- Speckled wood butterfly



How to get involved:

London Wildlife Trust runs regular conservation workdays.

To use the site for educational visits and for details of events and other activities please contact London Wildlife Trust.

Contact details:

London Wildlife Trust 0208 755 2339 or
e-mail wildcrane@wildlondon.org.uk

Hillingdon London Wildlife Trust Volunteer
Group: Roger Taylor 01895 448028 or
e-mail LWTHillingdon@aol.com

How to get there:

Bus: U2: Ryefield Avenue
Tube: Hillingdon (Metropolitan Line)
then 10-15 minute walk
Not wheelchair accessible
Parking at Lynhurst Crescent

Access – open at all times